

GENERAL NOTES

1. MATERIAL:
 - (A) SHAFT - ASTM A572-55
 - (B) BASE & FLANGE PLATES - ASTM A572-50
 - (C) ANCHOR BOLTS - ASTM F1554-55 (THREAD PER UNC SERIES)
 - (D) ALL OTHER BOLTS - ASTM A325 (THREAD PER UNC SERIES)
 - (E) POLE TOP PLATE - ASTM A36
2. FINISH:
 - (A) EACH ASSEMBLY TO BE GALVANIZED TO ASTM A123.
 - (B) THE TOP PORTION OF THE ANCHOR BOLTS TO BE GALVANIZED TO ASTM A153.
 - (C) ALL THREADED FASTENERS TO BE GALVANIZED TO ASTM A153.
3. SIGNAL SUPPORT ARMS OVER 50'-0" TO BE 2 SECTION SLIPPED TOGETHER AFTER GALVANIZING AND HELD IN PLACE WITH ONE 5/8" DIA. PIN BOLT. ARM TO BE SHIPPED ASSEMBLED.

ALTHOUGH RARE, VIBRATIONS SEVERE ENOUGH TO CAUSE DAMAGE CAN OCCASIONALLY OCCUR IN STRUCTURES OF ALL TYPES. BECAUSE THEY ARE INFLUENCED BY MANY INTERACTING VARIABLES, VIBRATIONS ARE GENERALLY UNPREDICTABLE. THE USER'S MAINTENANCE PROGRAM SHOULD INCLUDE OBSERVATION FOR EXCESSIVE VIBRATION AND EXAMINATION FOR ANY STRUCTURAL DAMAGE OR BOLT LOOSENING. THE PELCO STRUCTURAL, LLC WARRANTY SPECIFICALLY EXCLUDES FATIGUE FAILURE OR SIMILAR PHENOMENA RESULTING FROM INDUCED VIBRATION, HARMONIC OSCILLATION, OR RESONANCE ASSOCIATED WITH MOVEMENT OR AIR CURRENTS AROUND THE PRODUCT.




CUSTOMER: LOUISIANA DEPARTMENT OF TRANSPORTATION AGENT:		DRAWING NUMBER: LALMA-01 SHEET NUMBER: 1 OF 6 REV: 2	
DESCRIPTION: LOUISIANA 2012 SINGLE MAST ARM WITH LUMINAIRE		DATE: 10/25/12	
DRAWN BY: DO	CHECKED BY: JRS	APPROVED BY: JRS	DATE: 10/25/12
REV: 1 DO MDK 2/15/13	CHECKED: MDK APPROVED:	JOB NUMBER: STANDARD	DRAWING NUMBER: LALMA-01 SHEET NUMBER: 1 OF 6 REV: 2


Single Mast Arm

Item	Qty.	Upright			Anchor Bolts			Base Plate			Arm Shaft			Flange Bolts			Flange Plate										
		Bot OD	Top OD	Thk.	Length	Qty.	Dia.	Length	Thk.	PL Dia.	BC	Bot OD	Top OD	Thk.	Length	Splice	Ang.	Rise	Qty.	Dia.	Length	Tp	Ta	PL Sq. C	PL Sq. A	Bolt Sq. D	Bolt Sq. B
LA2000		17.750	14.813	3/16"	21'-0"	4	2 1/4"	89" + 7"	2 1/4"	30"	24"	8.000	5.000	3/16"	20'-0"	--	2.00	8 1/2"	4	1 1/4"	5"	1 1/2"	1 1/2"	15"	23"	11 1/2"	19 1/2"
LA2500		17.750	14.813	3/16"	21'-0"	4	2 1/4"	89" + 7"	2 1/4"	30"	24"	9.750	5.000	3/16"	25'-0"	--	2.00	10 1/2"	4	1 1/4"	5"	1 1/2"	1 1/2"	15"	23"	11 1/2"	19 1/2"
LA3000		17.750	14.813	3/16"	21'-0"	4	2 1/4"	89" + 7"	2 1/4"	30"	24"	11.500	5.000	3/16"	30'-0"	--	2.00	12 1/2"	4	1 1/4"	5"	1 1/2"	1 1/2"	15"	23"	11 1/2"	19 1/2"
LA3500		16.750	13.813	5/16"	21'-0"	4	2 1/4"	89" + 7"	2 1/4"	30"	24"	12.750	5.000	3/16"	35'-0"	--	2.00	14 1/2"	4	1 1/4"	5"	1 1/2"	1 1/2"	19"	22"	15 1/2"	18 1/2"
LA4000		16.750	13.813	5/16"	21'-0"	4	2 1/4"	89" + 7"	2 1/4"	30"	24"	14.250	5.000	3/16"	40'-0"	--	2.00	16 3/4"	4	1 1/4"	5"	1 1/2"	1 1/2"	19"	22"	15 1/2"	18 1/2"
LA4500		16.750	13.813	5/16"	21'-0"	4	2 1/4"	89" + 7"	2 1/4"	30"	24"	15.750	5.000	3/16"	45'-0"	--	2.25	21 1/4"	4	1 1/4"	5"	1 1/2"	1 1/2"	19"	22"	15 1/2"	18 1/2"
LA5000		18.000	15.063	3/8"	21'-0"	4	2 1/4"	89" + 7"	2 1/2"	30"	24"	15.250	5.000	1/4"	50'-0"	--	2.25	23 1/2"	4	1 1/2"	6"	1 3/4"	1 3/4"	19"	24"	15"	20"
LA5500		18.000	15.063	3/8"	21'-0"	4	2 1/4"	89" + 7"	2 1/2"	30"	24"	15.000	9.034	5/16"	31'-3"	1'-3"	2.25	26"	4	1 1/2"	6"	1 3/4"	1 3/4"	19"	24"	15"	20"
LA6000		22.500	19.563	5/16"	21'-0"	6	2 1/4"	89" + 7"	2 1/4"	36"	30"	15.250	9.636	5/16"	31'-4"	1'-4"	2.50	31 1/2"	4	1 1/2"	6 1/4"	1 3/4"	2"	21"	28"	17"	24"
LA6500		22.500	19.563	5/16"	21'-0"	6	2 1/4"	89" + 7"	2 1/4"	36"	30"	16.500	9.792	5/16"	36'-4"	1'-4"	2.50	34"	4	1 1/2"	6 1/4"	1 3/4"	2"	21"	28"	17"	24"
LA7000		22.500	19.563	5/16"	21'-0"	6	2 1/4"	89" + 7"	2 1/4"	36"	30"	17.750	9.926	5/16"	41'-4"	1'-4"	2.50	36 3/4"	4	1 1/2"	6 1/4"	1 3/4"	2"	21"	28"	17"	24"

Item	Qty.	Upright			
		Bot OD	Top OD	Thk.	Length
LA2000E		14.813	14.000	3/16"	6'-0"
LA2500E		14.813	14.000	3/16"	6'-0"
LA3000E		14.813	14.000	3/16"	6'-0"
LA3500E		13.813	13.000	3/16"	6'-0"
LA4000E		13.813	13.000	3/16"	6'-0"
LA4500E		13.813	13.000	3/16"	6'-0"
LA5000E		15.063	13.250	3/16"	6'-0"
LA5500E		15.063	13.250	3/16"	6'-0"
LA6000E		19.563	18.750	3/16"	6'-0"
LA6500E		19.563	18.750	3/16"	6'-0"
LA7000E		19.563	18.750	3/16"	6'-0"



JAMES R. SUTPHEN
PROFESSIONAL ENGINEER
License No. 34448
STATE OF LOUISIANA

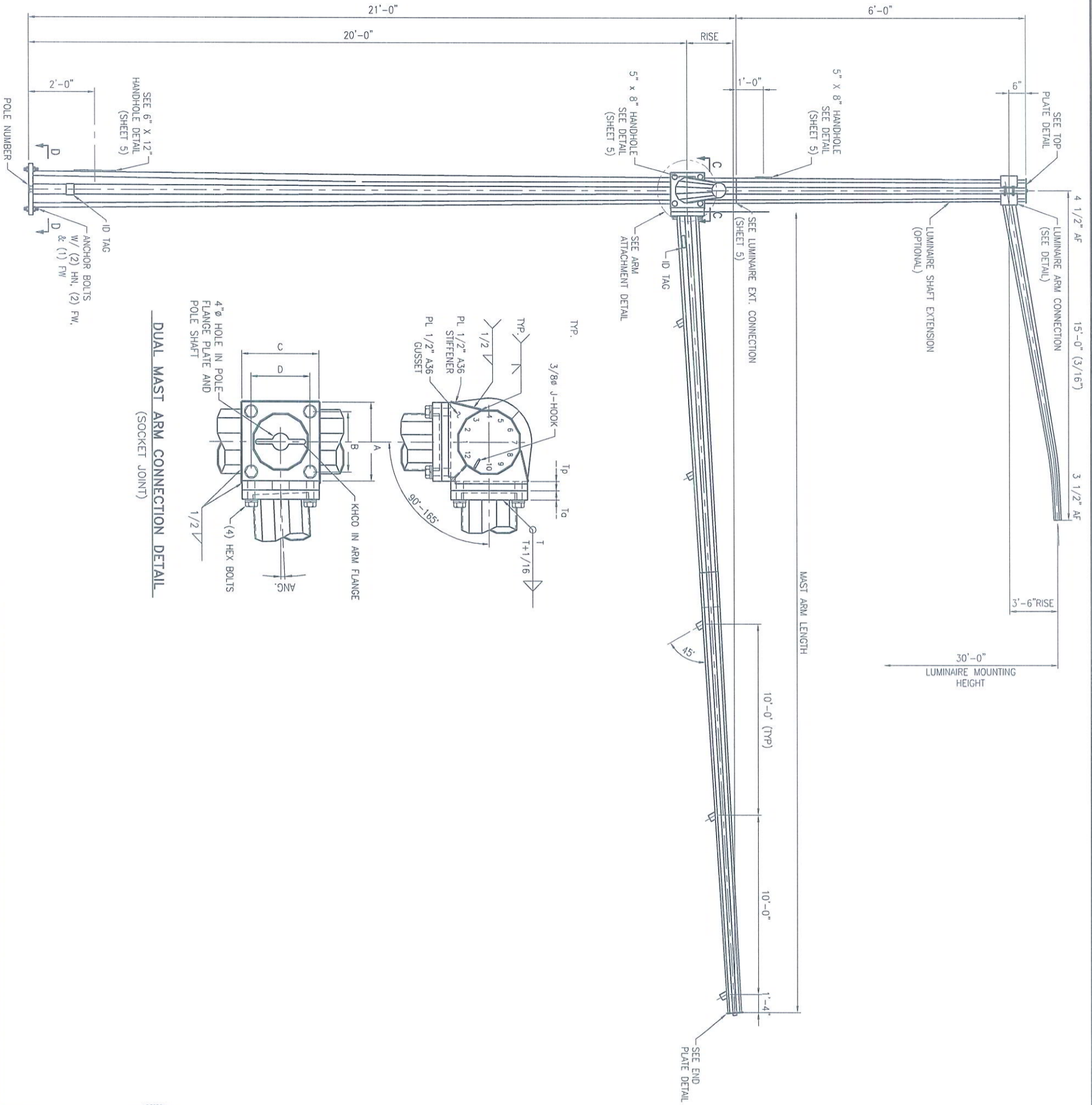


pelco
STRUCTURAL, L.L.C.
LOUISIANA DEPARTMENT OF TRANSPORTATION

1501 INDUSTRIAL BLVD.
CLAREMORE, OKLAHOMA 74017
PH: 918-283-4004
FAX: 918-283-4005
WWW.PELCOSTRUCTURAL.COM

CUSTOMER: LOUISIANA DEPARTMENT OF TRANSPORTATION
AGENT: _____
DESCRIPTION: _____
DRAWN BY: DO CHECKED BY: JRS APPROVED BY: JRS DATE: 10/29/12
TITLE: LOUISIANA 2012 SINGLE MAST ARM WITH LUMINAIRE
JOB NUMBER: STANDARD DRAWING NUMBER: LALMA-02 SHEET NUMBER: 2 OF 6 REV: 0

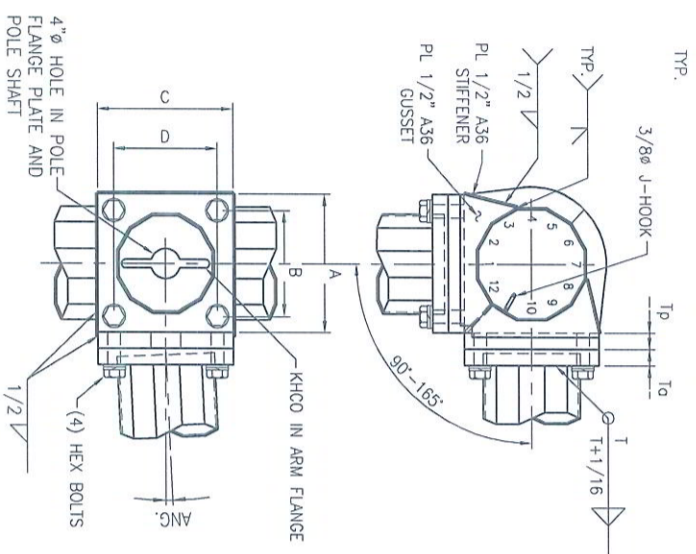
REV / DRAWN / CHECKED / APPROVED / DATE



GENERAL NOTES

- MATERIAL:**
 - (A) SHAFT - ASTM A572-55
 - (B) BASE & FLANGE PLATES - ASTM A572-50
 - (C) ANCHOR BOLTS - ASTM F1554-55 (THREAD PER UNC SERIES)
 - (D) ALL OTHER BOLTS - ASTM A325 (THREAD PER UNC SERIES)
 - (E) POLE TOP PLATE - ASTM A36
 - FINISH:**
 - (A) EACH ASSEMBLY TO BE GALVANIZED TO ASTM A123.
 - (B) THE TOP PORTION OF THE ANCHOR BOLTS TO BE GALVANIZED TO ASTM A153.
 - (C) ALL THREADED FASTENERS TO BE GALVANIZED TO ASTM A153.
 - SIGNAL SUPPORT ARMS OVER 50'-0" TO BE 2 SECTION SUPPED TOGETHER AFTER GALVANIZING AND HELD IN PLACE WITH ONE 5/8" DIA. PIN BOLT. ARM TO BE SHIPPED ASSEMBLED.**
- ALTHOUGH RARE, VIBRATIONS SEVERE ENOUGH TO CAUSE DAMAGE CAN OCCASIONALLY OCCUR IN STRUCTURES OF ALL TYPES. BECAUSE THEY ARE INFLUENCED BY MANY INTERACTING VARIABLES, VIBRATIONS ARE GENERALLY UNPREDICTABLE. THE USER'S MAINTENANCE PROGRAM SHOULD INCLUDE OBSERVATION FOR EXCESSIVE VIBRATION AND EXAMINATION FOR ANY STRUCTURAL DAMAGE OR BOLT LOOSENING. THE PELCO STRUCTURAL, LLC WARRANTY SPECIFICALLY EXCLUDES FATIGUE FAILURE OR SIMILAR PHENOMENA RESULTING FROM INDUCED VIBRATION, HARMONIC OSCILLATION, OR RESONANCE ASSOCIATED WITH MOVEMENT OR AIR CURRENTS AROUND THE PRODUCT.

DUAL MAST ARM CONNECTION DETAIL (SOCKET JOINT)



SEE 6" X 12" HANDHOLE DETAIL (SHEET 5)

SEE TOP PLATE DETAIL (SEE DETAIL)

SEE LUMINAIRE EXT. CONNECTION (SHEET 5)

SEE END PLATE DETAIL

SEE ARM ATTACHMENT DETAIL (SHEET 5)

SEE 6" X 12" HANDHOLE DETAIL (SHEET 5)

ANCHOR BOLTS W/ (2) HN, (2) FW, & (1) FW

ID TAG

POLE NUMBER

STATE OF LOUISIANA
Professional Engineer
JAMES R. STUPHEN
License No. 34448

STRUCTURAL ENGINEERING

IN

pelco
STRUCTURAL, L.L.C.

1501 INDUSTRIAL BLVD.
CLAREMORE, OKLAHOMA 74017
PH: 918-283-4004
FAX: 918-283-4005
WWW.PELCOSTRUCTURAL.COM

CUSTOMER: LOUISIANA DEPARTMENT OF TRANSPORTATION

AGENT: _____

DESCRIPTION: _____

DRAWN BY: DO CHECKED BY: JRS APPROVED BY: JRS DATE: 10/29/12

TITLE: LOUISIANA 2012 DUAL MAST ARM WITH LUMINAIRE

JOB NUMBER	DRAWING NUMBER	SHEET NUMBER	REV
STANDARD	LADMA-01	3 OF 6	1

REV	CHECKED	APPROVED	DATE
2	MDK	MDK	2/15/13
2	DO	JRS	10/19/15

Item	Qty.	Upright			Anchor Bolts			Base Plate			Primary Arm Shaft			Flange Bolts			Flange Plate												
		Bot OD	Top OD	Thk.	Length	Qty.	Dia.	Length	Thk.	PL Sq.	BC	Bot OD	Top OD	Thk.	Length	Splice	Ang.	Rise	Qty.	Dia.	Length	TP	Ta	PL Sq.	PL Sq.	PL Sq.	Bolt Sq.		
LA2520		16.250	13.313	1/4"	21' - 0"	4	2 1/4"	89" + 7"	30"	24"	9.750	5.000	3/16"	25' - 0"	--	2.00	10 1/2"	4	1 1/4"	3 1/4"	14"	14"	10 1/2"	10 1/2"	14"	14"	10 1/2"	10 1/2"	
LA2525		16.250	13.313	1/4"	21' - 0"	4	2 1/4"	89" + 7"	30"	24"	9.750	5.000	3/16"	25' - 0"	--	2.00	10 1/2"	4	1 1/4"	3 1/4"	14"	14"	10 1/2"	10 1/2"	14"	14"	10 1/2"	10 1/2"	
LA3025		16.250	13.313	1/4"	21' - 0"	4	2 1/4"	89" + 7"	30"	24"	11.500	5.000	3/16"	30' - 0"	--	2.00	12 1/2"	4	1 1/4"	3 1/4"	16"	16"	12 1/2"	12 1/2"	16"	16"	12 1/2"	12 1/2"	
LA3520		17.250	14.313	1/4"	21' - 0"	4	2 1/4"	89" + 7"	30"	24"	12.750	5.000	3/16"	35' - 0"	--	2.00	14 1/2"	4	1 1/4"	3 1/4"	14"	14"	10 1/2"	10 1/2"	14"	14"	10 1/2"	10 1/2"	
LA3525		17.250	14.313	1/4"	21' - 0"	4	2 1/4"	89" + 7"	30"	24"	12.750	5.000	3/16"	35' - 0"	--	2.00	14 1/2"	4	1 1/4"	3 1/4"	14"	14"	10 1/2"	10 1/2"	14"	14"	10 1/2"	10 1/2"	
LA4025		17.000	14.063	5/16"	21' - 0"	4	2 1/4"	89" + 7"	30"	24"	14.250	5.000	3/16"	40' - 0"	--	2.00	16 1/4"	4	1 1/4"	3 3/4"	16"	16"	12 1/2"	12 1/2"	16"	16"	12 1/2"	12 1/2"	
LA4030		17.000	14.063	5/16"	21' - 0"	4	2 1/4"	89" + 7"	30"	24"	14.250	5.000	3/16"	40' - 0"	--	2.00	16 1/4"	4	1 1/4"	3 3/4"	16"	16"	12 1/2"	12 1/2"	16"	16"	12 1/2"	12 1/2"	
LA4035		17.000	14.063	5/16"	21' - 0"	4	2 1/4"	89" + 7"	30"	24"	14.250	5.000	3/16"	40' - 0"	--	2.00	16 1/4"	4	1 1/4"	3 3/4"	16"	16"	12 1/2"	12 1/2"	16"	16"	12 1/2"	12 1/2"	
LA4525		17.000	14.063	3/8"	21' - 0"	4	2 1/4"	89" + 7"	30"	24"	15.750	5.000	3/16"	45' - 0"	--	2.25	21 1/4"	4	1 1/4"	3 3/4"	19"	19"	15 1/2"	15 1/2"	19"	19"	15 1/2"	15 1/2"	
LA4530		17.000	14.063	3/8"	21' - 0"	4	2 1/4"	89" + 7"	30"	24"	15.750	5.000	3/16"	45' - 0"	--	2.25	21 1/4"	4	1 1/4"	3 3/4"	19"	19"	15 1/2"	15 1/2"	19"	19"	15 1/2"	15 1/2"	
LA4535		17.000	14.063	3/8"	21' - 0"	4	2 1/4"	89" + 7"	30"	24"	15.750	5.000	3/16"	45' - 0"	--	2.25	21 1/4"	4	1 1/4"	3 3/4"	19"	19"	15 1/2"	15 1/2"	19"	19"	15 1/2"	15 1/2"	
LA4540		17.000	14.063	3/8"	21' - 0"	4	2 1/4"	89" + 7"	30"	24"	15.750	5.000	3/16"	45' - 0"	--	2.25	21 1/4"	4	1 1/4"	3 3/4"	19"	19"	15 1/2"	15 1/2"	19"	19"	15 1/2"	15 1/2"	
LA5035		22.250	19.313	1/4"	21' - 0"	6	2 1/4"	89" + 7"	36"	30"	15.250	5.000	1/4"	50' - 0"	--	2.25	23 1/2"	4	1 1/2"	4 1/4"	19"	19"	13 1/4"	13 1/4"	19"	19"	15"	15"	
LA5040		22.250	19.313	1/4"	21' - 0"	6	2 1/4"	89" + 7"	36"	30"	15.250	5.000	1/4"	50' - 0"	--	2.25	23 1/2"	4	1 1/2"	4 1/4"	19"	19"	13 1/4"	13 1/4"	19"	19"	15"	15"	
LA5540		21.250	18.313	5/16"	21' - 0"	6	2 1/4"	89" + 7"	36"	30"	15.000	9.034	5/16"	31' - 3"	1' - 3"	2.25	26"	4	1 1/2"	4 1/4"	19"	19"	13 1/4"	13 1/4"	19"	19"	15"	15"	
LA5545		21.250	18.313	5/16"	21' - 0"	6	2 1/4"	89" + 7"	36"	30"	15.000	9.034	5/16"	31' - 3"	1' - 3"	2.25	26"	4	1 1/2"	4 1/4"	19"	19"	13 1/4"	13 1/4"	19"	19"	15"	15"	
											9.773	5.000	3/16"	25' - 0"															

Item	Qty.	Secondary Arm Shaft			Flange Bolts			Flange Plate			Bolt Sq.					
		Bot OD	Top OD	Thk.	Length	Splice	Ang.	Rise	Qty.	Dia.	Length	TP	Ta	Height (1)	Width	Height
LA2520	8.000	5.000	3/16"	20' - 0"	--	2.00	8 1/2"	4	1 1/4"	3 1/4"	1 1/4"	11 1/4"	14"	14"	10 1/2"	10 1/2"
LA2525	9.750	5.000	3/16"	25' - 0"	--	2.00	10 1/2"	4	1 1/4"	3 1/4"	1 1/4"	11 1/4"	14"	14"	10 1/2"	10 1/2"
LA3025	9.750	5.000	3/16"	25' - 0"	--	2.00	10 1/2"	4	1 1/4"	3 1/4"	1 1/4"	11 1/4"	14"	14"	10 1/2"	10 1/2"
LA3520	8.000	5.000	3/16"	20' - 0"	--	2.00	8 1/2"	4	1 1/4"	3 1/4"	1 1/4"	11 1/4"	14"	14"	10 1/2"	10 1/2"
LA3525	9.750	5.000	3/16"	25' - 0"	--	2.00	10 1/2"	4	1 1/4"	3 1/4"	1 1/4"	11 1/4"	14"	14"	10 1/2"	10 1/2"
LA4025	9.750	5.000	3/16"	25' - 0"	--	2.00	10 1/2"	4	1 1/4"	3 1/4"	1 1/4"	11 1/4"	14"	14"	10 1/2"	10 1/2"
LA4030	11.500	5.000	3/16"	30' - 0"	--	2.00	12 1/2"	4	1 1/4"	3 1/4"	1 1/4"	11 1/4"	16"	16"	12 1/2"	12 1/2"
LA4035	12.750	5.000	3/16"	35' - 0"	--	2.00	14 1/2"	4	1 1/4"	3 1/4"	1 1/4"	11 1/4"	16"	16"	12 1/2"	12 1/2"
LA4525	9.750	5.000	3/16"	25' - 0"	--	2.00	10 1/2"	4	1 1/4"	3 1/4"	1 1/4"	11 1/4"	14"	14"	10 1/2"	10 1/2"
LA4530	11.500	5.000	3/16"	30' - 0"	--	2.00	12 1/2"	4	1 1/4"	3 1/4"	1 1/4"	11 1/4"	14"	14"	10 1/2"	10 1/2"
LA4535	12.750	5.000	3/16"	35' - 0"	--	2.00	14 1/2"	4	1 1/4"	3 1/4"	1 1/4"	11 1/4"	16"	16"	12 1/2"	12 1/2"
LA4540	14.250	5.000	3/16"	40' - 0"	--	2.00	16 3/4"	4	1 1/4"	3 3/4"	1 1/4"	11 1/4"	18"	18"	14 1/2"	14 1/2"
LA5040	14.250	5.000	3/16"	40' - 0"	--	2.00	16 3/4"	4	1 1/4"	3 3/4"	1 1/2"	11 1/2"	18"	18"	14 1/2"	14 1/2"
LA5540	14.250	5.000	3/16"	40' - 0"	--	2.00	16 3/4"	4	1 1/4"	3 3/4"	1 1/2"	11 1/2"	18"	18"	14 1/2"	14 1/2"
LA5545	15.750	5.000	3/16"	45' - 0"	--	2.25	21 1/4"	4	1 1/4"	3 3/4"	1 1/2"	11 1/2"	19"	19"	15 1/2"	15 1/2"

Item	Qty.	Arm Luminaire Extension		
		Upright Bot OD	Top OD	Thk.
LA2520E		13.313	12.500	3/16"
LA2525E		13.313	12.500	3/16"
LA3025E		13.313	12.500	3/16"
LA3520E		14.313	13.500	3/16"
LA3525E		14.313	13.500	3/16"
LA4025E		14.063	13.250	3/16"
LA4030E		14.063	13.250	3/16"
LA4035E		14.063	13.250	3/16"
LA4525E		14.063	13.250	3/16"
LA4530E		14.063	13.250	3/16"
LA4535E		14.063	13.250	3/16"
LA4540E		14.063	13.250	3/16"
LA5035E		19.313	18.500	3/16"
LA5040E		19.313	18.500	3/16"
LA5540E		18.313	17.500	3/16"
LA5545E		18.313	17.500	3/16"

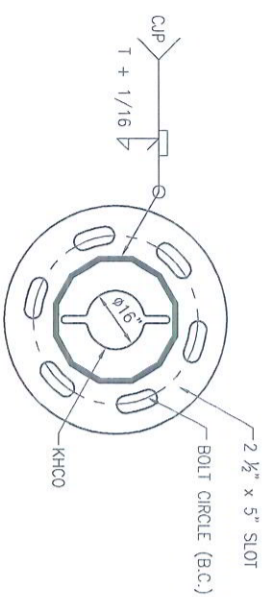
JAMES R. SITTPHEN
License No. 3448
PROFESSIONAL ENGINEER
IN
STRUCTURAL ENGINEERING

pelco
STRUCTURAL, L.L.C.

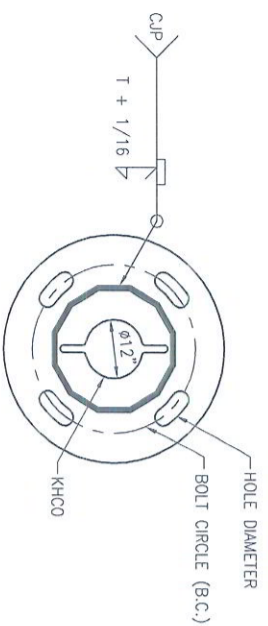
1501 INDUSTRIAL BLVD.
CLAREMORE, OKLAHOMA 74017
PH: 918-283-4004
FAX: 918-283-4005
WWW.PELCOSTRUCTURAL.COM

CUSTOMER: LOUISIANA DEPARTMENT OF TRANSPORTATION
AGENT: STRUCTURAL, L.L.C.

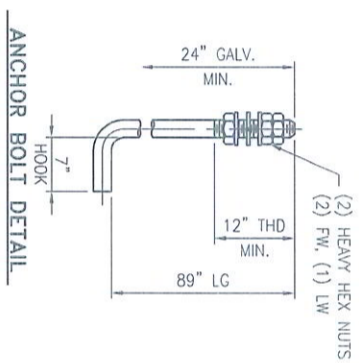
DESCRIPTION:	DRAWN BY: DO	CHECKED BY: JRS	APPROVED BY: JRS	DATE: 10/25/12
TITLE:	LOUISIANA 2012 DUAL MAST ARM WITH LUMINAIRE			
JOB NUMBER: STANDARD	DRAWING NUMBER: LADMA-02	SHEET NUMBER: 4 OF 6	REV: 0	



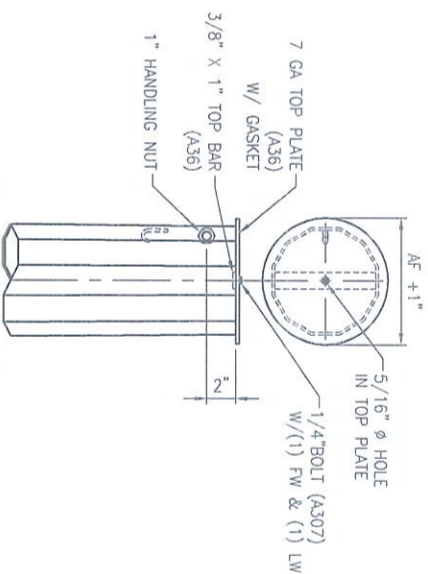
SECTION D-D
30" BOLT CIRCLE



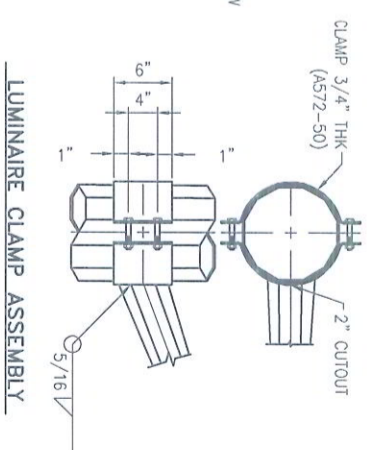
SECTION D-D
24" BOLT CIRCLE



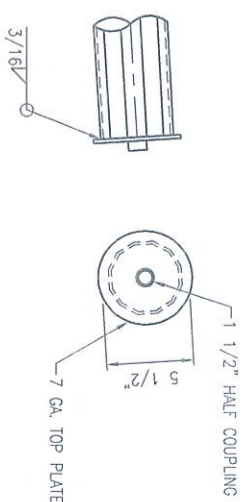
ANCHOR BOLT DETAIL



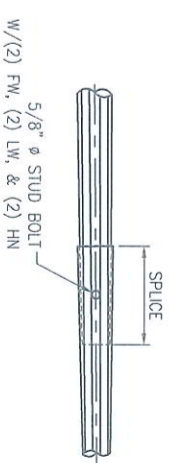
TOP PLATE DETAIL



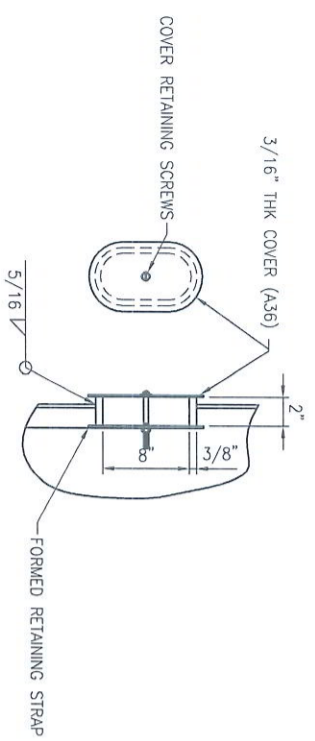
LUMINAIRE CLAMP ASSEMBLY



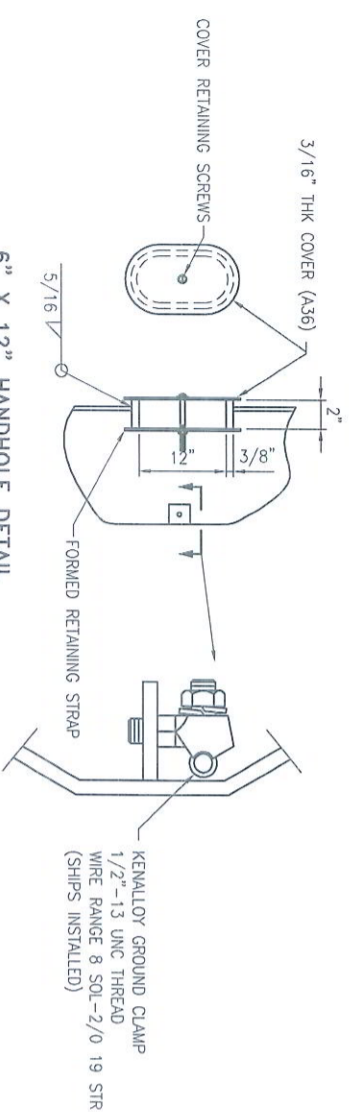
END PLATE DETAIL



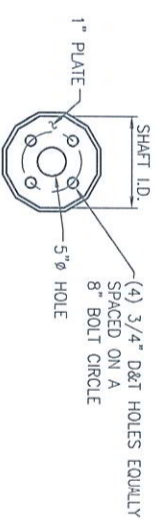
SPLICE DETAIL
(FOR ARMS OVER 50'-0")



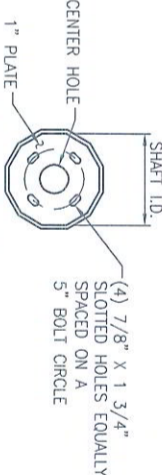
5" X 8" HANDHOLE DETAIL



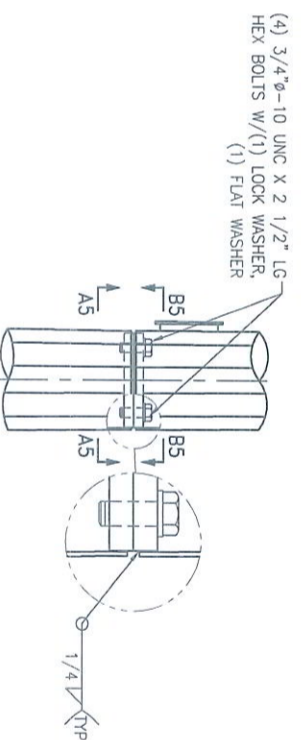
6" X 12" HANDHOLE DETAIL



SECTION A5-A5



SECTION B5-B5



LUMINAIRE EXTENSION CONNECTION

PELCO
LADOTD
PLN/SLN

PLN= ARM LENGTH
SLN= SECONDARY ARM LENGTH
ID TAG DETAIL

JAMES R. SUTIPPHEN
License No. 34448
PROFESSIONAL ENGINEER
STRUCTURAL ENGINEERING

pelco
STRUCTURAL, L.L.C.

1501 INDUSTRIAL BLVD.
CLAREMORE, OKLAHOMA 74017
PH: 918-283-4004
FAX: 918-283-4005
WWW.PELCOSTRUCTURAL.COM

CUSTOMER: LOUISIANA DEPARTMENT OF TRANSPORTATION

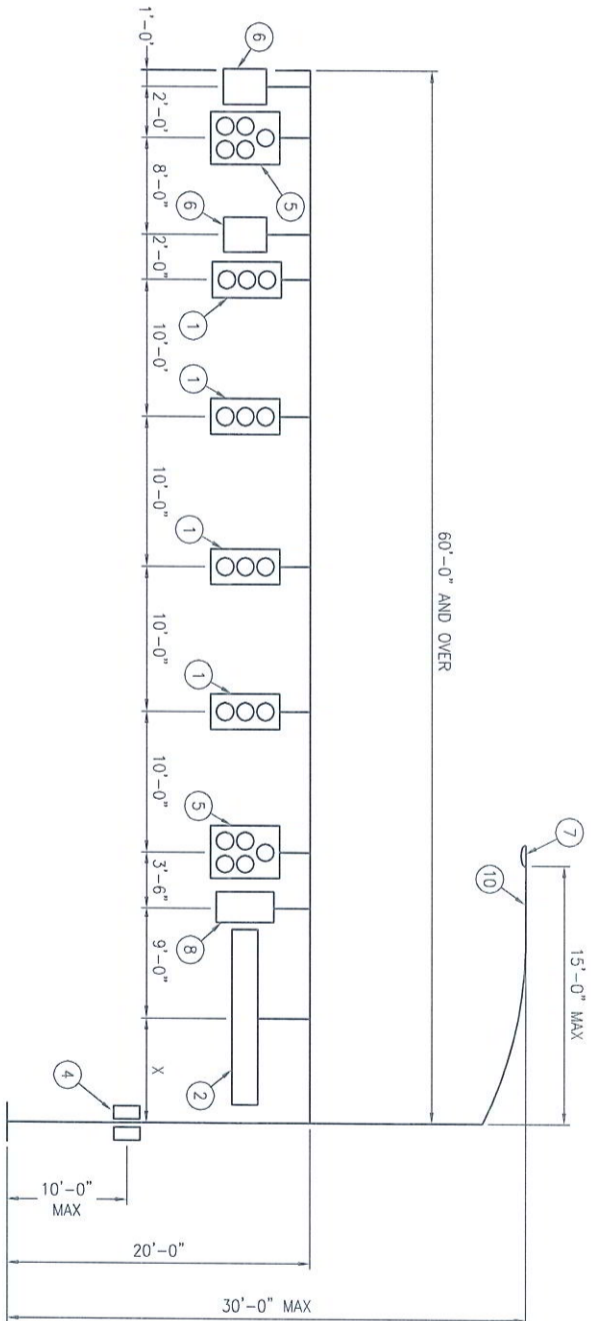
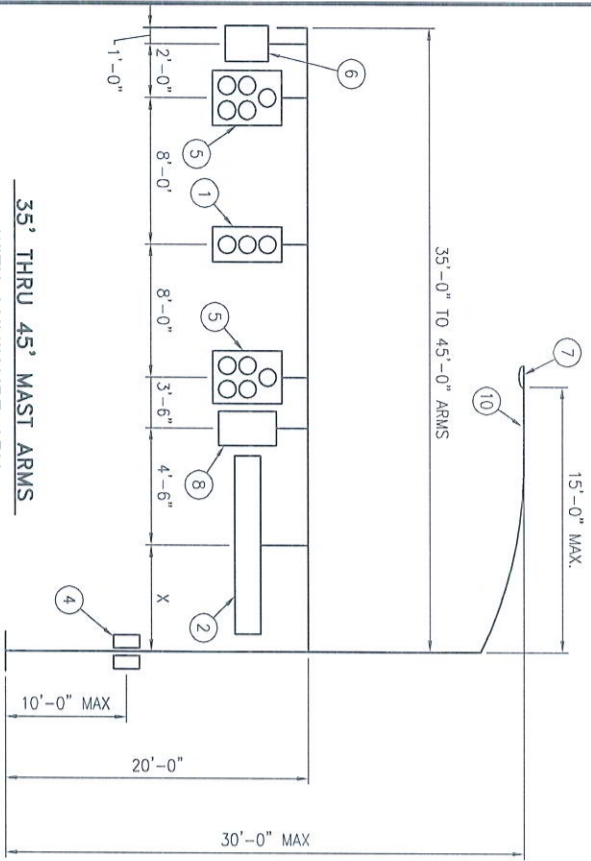
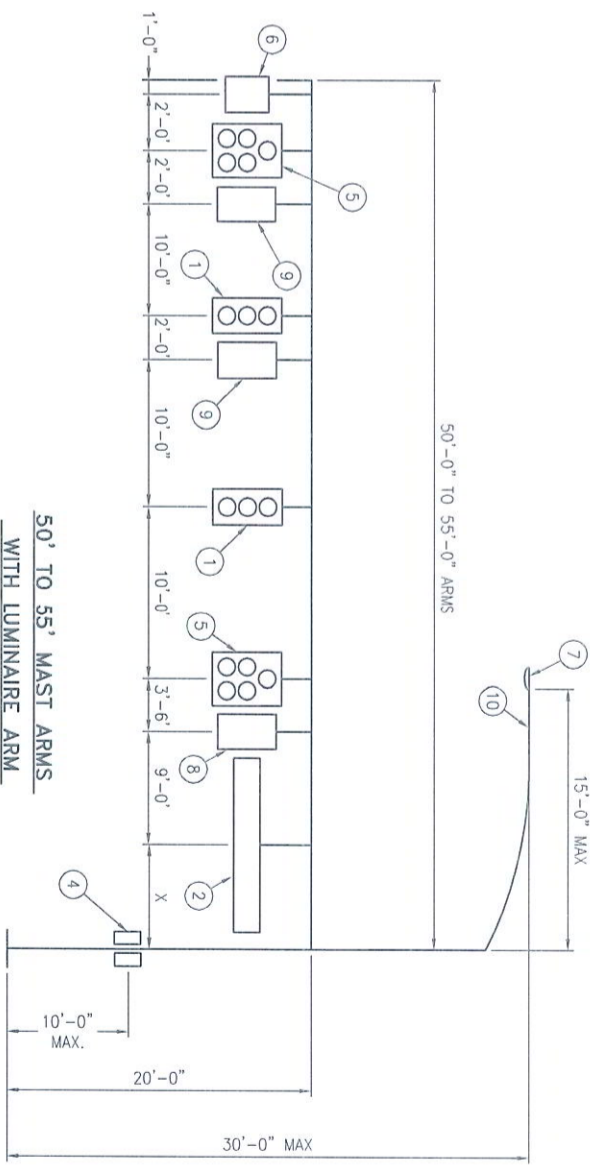
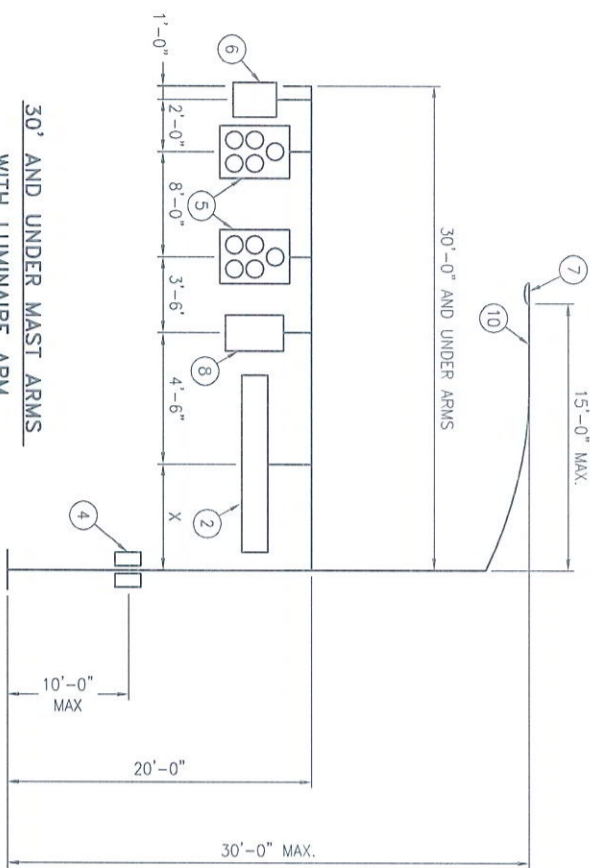
AGENT: JRS

DESCRIPTION: LUMINAIRE 2012
DUAL MAST ARM WITH LUMINAIRE

DRAWN BY: DO
CHECKED BY: JRS
APPROVED BY: JRS
DATE: 10/25/12

JOB NUMBER: STANDARD
DRAWING NUMBER: LADMA-02
SHEET NUMBER: 5 OF 6
REV: 1

REV	DATE	BY	DESCRIPTION
1	2/15/13	DO	DRAWN



Item No.	Description	Proj. Area (Sq. Ft.)	Weight (Lbs.)*
1	12" X 3 SEC. SIGNAL W/ BACKPLATES	10.4*	56.0
2	72" X 18" STREET NAME SIGN	9.0	36.0
3	12" X 3 SEC. SIGNAL HEAD NO BRACKET	4.9*	50.0
4	DUAL 2 SECTION PEDESTRIAN SIGNAL	8*	80.0
5	12" X 5 SEC. SIGNAL WITH BACKPLATES	16*	85.0
6	24" X 30" REGULATORY SIGN	5.0	20.0
7	LUMINAIRE	3.3	75.0
8	36" X 36" BLANK OUT REGULATORY SIGN (40" X 40" OVERALL)	11.2	94.0
9	30" X 36" REGULATORY SIGN	7.5	30.0
10	VIDEO DETECTOR CAMER	1.0	9.9

*EFFECTIVE PROJECTED AREA

JAMES R. SUTPHEN
 License No. 34448
 PROFESSIONAL ENGINEER
 IN
 STRUCTURAL ENGINEERING

Date: 10-19-15
 Signature: *James R. Sutphen*

pelco
 STRUCTURAL, L.L.C.

1501 INDUSTRIAL BLVD.
 CLAREMORE, OKLAHOMA 74017
 PH: 918-283-4004
 FAX: 918-283-4005
 WWW.PELCOSTRUCTURAL.COM

CUSTOMER: LOUISIANA DEPARTMENT OF TRANSPORTATION
 AGENT: DO
 CHECKED BY: JMS
 APPROVED BY: JMS
 DATE: 10/25/12

TITLE: LOUISIANA 2012 TRAFFIC STANDARD LOAD TREE

REV	DRAWN	CHECKED	APPROVED	DATE

JOB NUMBER	DRAWING NUMBER	SHEET NUMBER	REV
STANDARD	L/LOAD	6 of 6	0

DESIGN CRITERIA:

THESE TRAFFIC SIGNALS SUPPORT STRUCTURES SHALL BE DESIGNED IN ACCORDANCE WITH LOADING AND ALLOWABLE STRESS REQUIREMENTS OF ASHTO STANDARD SPECIFICATION FOR STRUCTURAL SUPPORTS FOR HIGHWAY SIGNS, LUMINAIRES, AND TRAFFIC SIGNALS, 5TH EDITION WITH 2010 AND 2011 INTERIM SPECIFICATIONS. WIND LOADS ARE BASED ON A BASIC WIND SPEED OF 130 MPH WITH A RECURRENCE INTERVAL OF 30 YEARS AND A FATIGUE CATEGORY OF 2. FATIGUE LOADS ARE BASED ON THE REQUIREMENTS OF SECTION 11.7 AND THE FOLLOWING DESIGN LOADS.

- * VORTEX SHEDDING: NOT APPLICABLE FOR STRUCTURES WITH A TAPER OF AT LEAST 0.14"/FT. PER ASHTO
- * NATURAL WIND GUSTS: THE YEARLY MEAN WIND SPEED FOR NATURAL WIND GUSTS WILL BE ASSUMED TO BE 11.2 MPH
- * GALLOPING: STRUCTURES ARE NOT DESIGNED TO RESIST PERIODIC GALLOPING FORCES
- * TRUCK-INDUCED GUST: STRUCTURES ARE NOT DESIGNED TO INCLUDE TRUCK-INDUCED GUSTS
- * ARMS SHALL BE STRAIGHT.